

# Aldora Chaise Longue

CRISTINA CELESTINO



The Aldora Chaise Longue, by Cristina Celestino, is available with a wing on either left or right side. The seater is a contemporary spin on a classical concept. The soft feminine shapes are inspired by the graceful petals of calla lilies and has the allure of Milanese bourgeois decadence. With the Aldora Chaise Longue, Cristina Celestino created an iconic piece with a wide range of inspirations and a subtle nod to her heritage. The Aldora Chaise Longue is also available as a sofa with wings on both sides. Configure the Aldora Chaise Longue to your personal tastes with the online configurator. Choose from a wide selection of fabrics and leathers and discover what it looks like with our AR tool.

---

## *Detailing*



With its contemporary spin on a classical concept, and availability in multiple configurations, Aldora finds its way in any modern-day interior

---

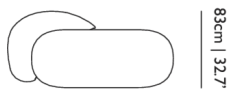
## *Colours*

---

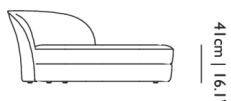
## Aldora Chaise Longue / Left

### Dimensions

179cm | 70.5"



83cm | 32.7"



41cm | 16.1"



78cm | 30.7"

### Product

**WIDTH** 179cm | 70.5"

**HEIGHT** 78cm | 30.7"

**DEPTH** 83cm | 32.7"

**WEIGHT NETTO** 59kg | 130.07lbs

### Packaging

**WIDTH** 105cm | 41.3"

**HEIGHT** 75cm | 29.5"

**CUBAGE** 1.61m<sup>3</sup> | 57.01ft<sup>3</sup>

**LENGTH** 205cm | 80.7"

**WEIGHT** 46.5kg | 102.51lbs

---

### Technical

#### MATERIAL

Wood and steel frame, foam over steel springs

#### HEIGHT ARMREST

78cm | 30.7"

#### SEAT HEIGHT

41cm | 16.1"

#### SEATING CAPACITY

1

#### SEAT DEPTH

60cm | 23.6"

#### SEAT WIDTH

150cm | 59.1"

---

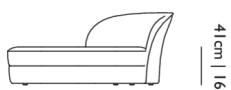
## Aldora Chaise Longue / Right

### Dimensions

179cm | 70.5"



83cm | 32.7"



41cm | 16.1"



78cm | 30.7"

### Product

**WIDTH** 179cm | 70.5"

**HEIGHT** 78cm | 30.7"

**DEPTH** 83cm | 32.7"

**WEIGHT NETTO** 59kg | 130.07lbs

### Packaging

**WIDTH** 105cm | 41.3"

**HEIGHT** 75cm | 29.5"

**CUBAGE** 1.61m<sup>3</sup> | 57.01ft<sup>3</sup>

**LENGTH** 205cm | 80.7"

**WEIGHT** 46.5kg | 102.51lbs

---

## Technical

### MATERIAL

Wood and steel frame, foam over steel springs

### HEIGHT ARMREST

78cm | 30.7"

### SEAT DEPTH

60cm | 23.6"

### SEAT HEIGHT

41cm | 16.1"

### SEAT WIDTH

150cm | 59.1"

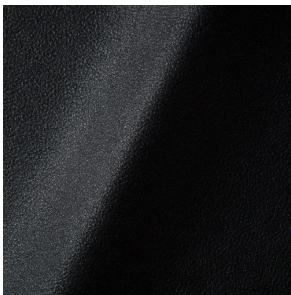
### SEATING CAPACITY

1

---

## Upholstery

*ABBRACCI (available in 5 colours)*



### COMPOSITION

100% PES

### ABRASION

30000 martindale  
lightfastness 3 - 4  
pilling 5

### FIRE RESISTANCE

BS 5852 - Ignition source  
0 (Cigarette)  
BS 5852 - Ignition source  
1 (Match flame equivalent)  
EN 1021-1 (Cigarette)  
EN 1021-2 (Match)  
TB 117-2013

---

*ARDA (available in 12 colours)*



### ABRASION

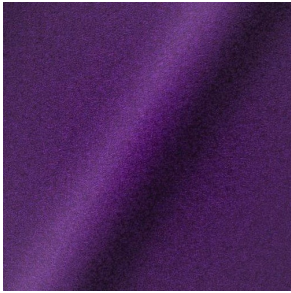
50000 martindale  
lightfastness 5 - 6  
pilling 4 - 5

### FIRE RESISTANCE

BS 5852 - Ignition source  
0 (Cigarette)  
BS 5852 - Ignition source  
5 (Crib 5)  
BS 5852 - Ignition source  
1 (Match flame equivalent)  
EN 1021-1 (Cigarette)  
EN 1021-2 (Match)  
TB 117-2013  
EU Ecolabel

---

*DIVINA 3 (available in 56 colours)*



**COMPOSITION**  
100% WO

**ABRASION**  
45000 martindale  
lightfastness 7  
pilling 3

**FIRE RESISTANCE**  
BS 5852 - Ignition source  
0 (Cigarette)  
BS 5852 - Ignition source  
5 (Crib 5)  
BS 5852 - Ignition source  
1 (Match flame equivalent)  
EN 1021-1 (Cigarette)  
EN 1021-2 (Match)  
TB 117-2013  
EU Ecolabel

---

*DIVINA MD (available in 27 colours)*



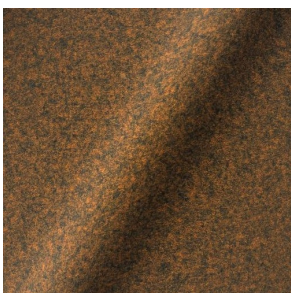
**COMPOSITION**  
100% WO

**ABRASION**  
45000 martindale  
lightfastness 6  
pilling 3

**FIRE RESISTANCE**  
BS 5852 - Ignition source  
0 (Cigarette)  
BS 5852 - Ignition source  
5 (Crib 5)  
BS 5852 - Ignition source  
1 (Match flame equivalent)  
EN 1021-1 (Cigarette)  
EN 1021-2 (Match)  
EU Ecolabel

---

*DIVINA MELANGE 3 (available in 49 colours)*



**COMPOSITION**  
100% WO

**ABRASION**  
45000 martindale  
lightfastness 6 - 7  
pilling 3

**FIRE RESISTANCE**  
BS 5852 - Ignition source  
0 (Cigarette)  
BS 5852 - Ignition source  
5 (Crib 5)  
BS 5852 - Ignition source  
1 (Match flame equivalent)  
EN 1021-1 (Cigarette)  
EN 1021-2 (Match)  
TB 117-2013  
EU Ecolabel

*Bearded Leopard (available in 3 colours)*



**COMPOSITION**

77% CV, 15% PES, 7% CO,  
1% PA

**ABRASION**

15000 martindale  
lightfastness 4 - 6  
pilling 4

---

*Calligraphy Bird (available in 4 colours)*



**COMPOSITION**

64% CV, 21% PES, 15%  
CO

**ABRASION**

50000 martindale  
lightfastness 4 - 6  
pilling 5

---

*Dodo Pavone (available in 3 colours)*



**COMPOSITION**

12% CO, 88% PES

**ABRASION**

40000 martindale  
lightfastness 5  
pilling 4 - 5

---

*Memento Moooi Medley (available in 1 colours)*



**COMPOSITION**

100% PES

**ABRASION**

50000 martindale  
lightfastness 4 - 6  
pilling 5

**FIRE RESISTANCE**

EN 1021-1 (Cigarette)  
EN 1021-2 (Match)  
TB 117-2013

*Menagerie of Extinct Animals (available in 2 colours)*



**COMPOSITION**

100% PES

**ABRASION**

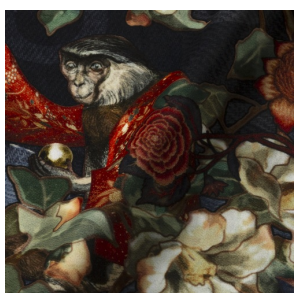
50000 martindale  
lightfastness 4 - 6  
pilling 5

**FIRE RESISTANCE**

EN 1021-1 (Cigarette)  
EN 1021-2 (Match)  
TB 117-2013

---

*Rendezvous Tokyo Blue (available in 1 colours)*



**COMPOSITION**

100% PES

**ABRASION**

50000 martindale  
lightfastness 4 - 6  
pilling 5

---

*Blushing Sloth Melange Mohair (available in 1 colours)*



**COMPOSITION**

85% WV, 15% WM

**ABRASION**

15000 martindale  
lightfastness 4 - 6  
pilling 2 - 3

---

*Blushing Sloth Woolly Mohair (available in 1 colours)*



**COMPOSITION**

24% PES, 15% PA, 8% CO,  
24% WM, 29% WV

**ABRASION**

40000 martindale  
lightfastness 4 - 6  
pilling 3 - 4

---

*FIORD (available in 39 colours)*



**COMPOSITION**

92% WV, 8% PA

**ABRASION**

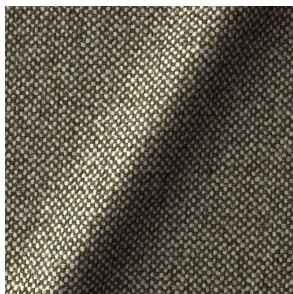
60000 martindale  
lightfastness 6  
pilling 4 - 5

**FIRE RESISTANCE**

EN 1021-1 (Cigarette)  
EN 1021-2 (Match)  
BS 5852 - Ignition source  
0 (Cigarette)  
BS 5852 - Ignition source  
1 (Match flame equivalent)

---

*HALLINGDAL 65 (available in 58 colours)*



**COMPOSITION**

30% CV, 70% WV

**ABRASION**

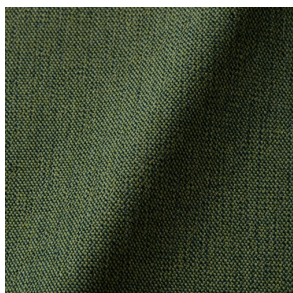
100000 martindale  
lightfastness 7  
pilling 3 - 4

**FIRE RESISTANCE**

BS 5852 - Ignition source  
0 (Cigarette)  
BS 5852 - Ignition source  
5 (Crib 5)  
BS 5852 - Ignition source  
1 (Match flame equivalent)  
EN 1021-1 (Cigarette)  
EN 1021-2 (Match)  
TB 117-2013  
EU Ecolabel

---

*JUSTO (available in 10 colours)*



**COMPOSITION**

15% CO, 35% PC, 10% PA,  
40% CV

**ABRASION**

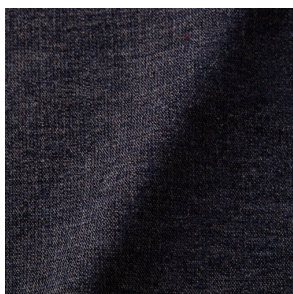
50000 martindale  
lightfastness 5  
pilling 4

**FIRE RESISTANCE**

EN 1021-1 (Cigarette)  
EN 1021-2 (Match)  
TB 117-2013

---

*LISCIO (available in 11 colours)*



**COMPOSITION**

35% WO, 35% CV, 21%  
CO, 9% PA

**ABRASION**

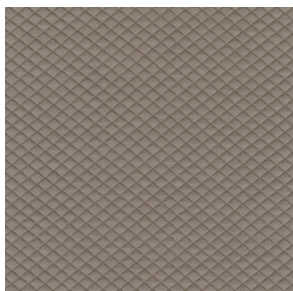
30000 martindale  
lightfastness 4 - 6  
pilling 4

**FIRE RESISTANCE**

TB 117-2013

---

*MOSAIC 2 (available in 15 colours)*



**COMPOSITION**

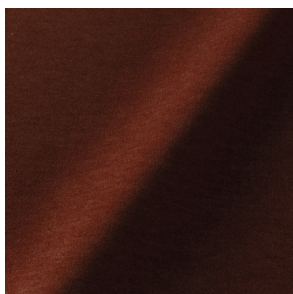
58% PES, 27% WV, 9% PA,  
6% EA

**ABRASION**

100000 martindale  
lightfastness 6 - 7  
pilling 4 - 5

---

*PALETTE (available in 24 colours)*



**COMPOSITION**

42% CO, 29% WO, 29%  
TL

**ABRASION**

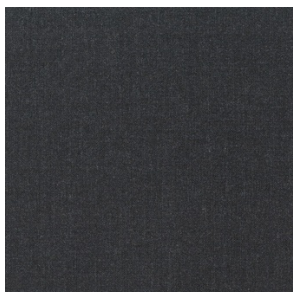
45000 martindale  
lightfastness 4 - 5  
pilling 3 - 3

**FIRE RESISTANCE**

BS 5852 - Ignition source  
0 (Cigarette)  
TB 117-2013  
BS 5852 - Ignition source  
5 (Crib 5)

---

*REMIX 3 (available in 53 colours)*



**COMPOSITION**

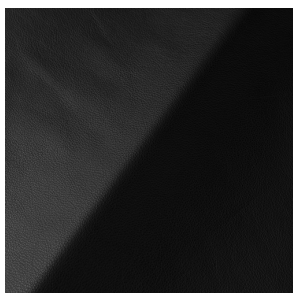
10% PA, 90% WV

**ABRASION**

100000 martindale  
lightfastness 5  
pilling 4

---

*SAVANNE (available in 3 colours)*

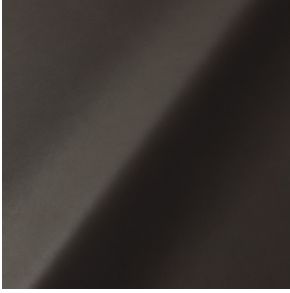


**FIRE RESISTANCE**

EN 1021-1 (Cigarette)  
EN 1021-2 (Match)  
TB 117-2013  
OEKO-TEX



*SHADE* (available in 6 colours)



**ABRASION**

lightfastness 3 - 4

**FIRE RESISTANCE**

EN 1021-1 (Cigarette)

EN 1021-2 (Match)

TB 117-2013

---

*SOLIS* (available in 9 colours)



**COMPOSITION**

60% WO, 30% PES, 2%  
PA, 3% PC

**ABRASION**

40000 martindale

lightfastness 5

pilling 3 - 4

**FIRE RESISTANCE**

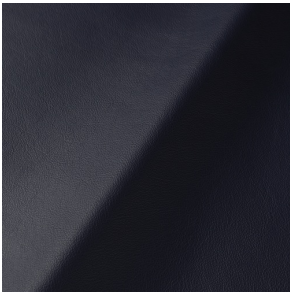
EN 1021-1 (Cigarette)

EN 1021-2 (Match)

TB 117-2013

---

*SPECTRUM* (available in 11 colours)



**ABRASION**

lightfastness 6 - 6

**FIRE RESISTANCE**

EN 1021-1 (Cigarette)

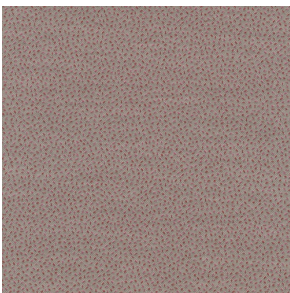
EN 1021-2 (Match)

TB 117-2013

OEKO-TEX

---

*SPRINKLES* (available in 23 colours)



**ABRASION**

80000 martindale

lightfastness 7

pilling 4

**FIRE RESISTANCE**

EU Ecolabel

BS 5852 - Ignition source

0 (Cigarette)

BS 5852 - Ignition source

5 (Crib 5)

BS 5852 - Ignition source

1 (Match flame equivalent)

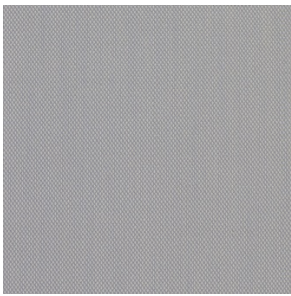
EN 1021-1 (Cigarette)

EN 1021-2 (Match)

TB 117-2013

---

*STEELCUT TRIO 3* (available in 54 colours)



**COMPOSITION**

90% WV, 10% PA

**ABRASION**

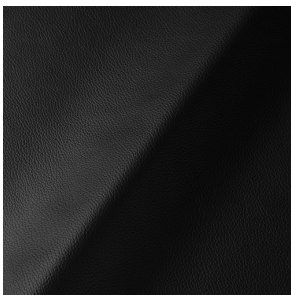
100000 martindale  
lightfastness 5  
pilling 4

**FIRE RESISTANCE**

BS 5852 - Ignition source  
0 (Cigarette)  
BS 5852 - Ignition source  
1 (Match flame equivalent)  
EN 1021-1 (Cigarette)  
EN 1021-2 (Match)  
EU Ecolabel

---

*ULTRA* (available in 6 colours)



**ABRASION**

lightfastness 6 - 7

**FIRE RESISTANCE**

EN 1021-1 (Cigarette)  
EN 1021-2 (Match)  
TB 117-2013  
ANSI/BIFMA M7.1 (Total  
Volatile Organic  
Compounds)

---

*VESPER* (available in 8 colours)



**COMPOSITION**

10% CO, 40% LI, 10% PA,  
10% PES, 30% CV

**ABRASION**

40000 martindale  
lightfastness 5  
pilling 4

**FIRE RESISTANCE**

EN 1021-1 (Cigarette)  
EN 1021-2 (Match)  
TB 117-2013