

m o o o i

Knitty Lounge Chair

NIKA ZUPANC



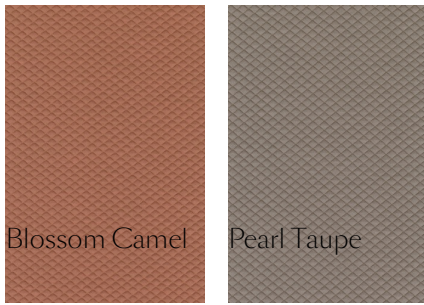
Indulge in the ultimate relaxation with the Knitty Lounge Chair by Nika Zupanc. This larger-than-life lounge chair is a real conversation piece in your home. An eye-catcher made with extra-large 'yarn' that resemble giant ship ropes. The chair's design is further enhanced with a knitted fabric, available in 15 colours, that boasts a quilted diamond pattern. Around a solid base, the yarn is woven in a chunky basket weave, providing an unmatched tactile sensation. The Knitty Lounge Chair's unique combination of scale and softness will make you curl up with your favourite book or series and give in to ultimate relaxation. Configure the Knitty Lounge Chair in your colour of choice with the online configurator and discover what it looks like in your home with AR!

Detailing



The Knitty Lounge Chair is about the pleasure of simple materials and transforming them into something unexpected that at first seemed impossible.

Colours



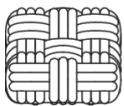
Knitty Lounge Chair

Dimensions

100cm | 39.4"



128cm | 50.4"



45cm | 17.7"



84cm | 33.1"

Product

WIDTH 100cm | 39.4"

HEIGHT 84cm | 33.1"

DEPTH 128cm | 50.4"

WEIGHT NETTO 53kg | 116.84lbs

Packaging

WIDTH 115cm | 45.3"

HEIGHT 105cm | 41.3"

CUBAGE 1.62m³ | 57.14ft³

LENGTH 134cm | 52.8"

WEIGHT 53kg | 116.84lbs

Technical

MATERIAL

Wooden frame, steel springs, foam

SEAT DEPTH

64cm | 25.2"

SEAT HEIGHT

45cm | 17.7"

SEAT WIDTH

100cm | 39.4"

SEATING CAPACITY

1

SEAT DEPTH 2

64cm | 25.2"

SEAT HEIGHT 2

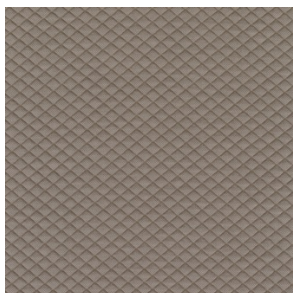
41cm | 16.1"

SEAT WIDTH 2

100cm | 39.4"

Upholstery

MOSAIC 2 (available in 15 colours)



COMPOSITION

58% PES, 27% WV, 9% PA,
6% EA

ABRASION

100000 martindale
lightfastness 6 - 7
pilling 4 - 5
